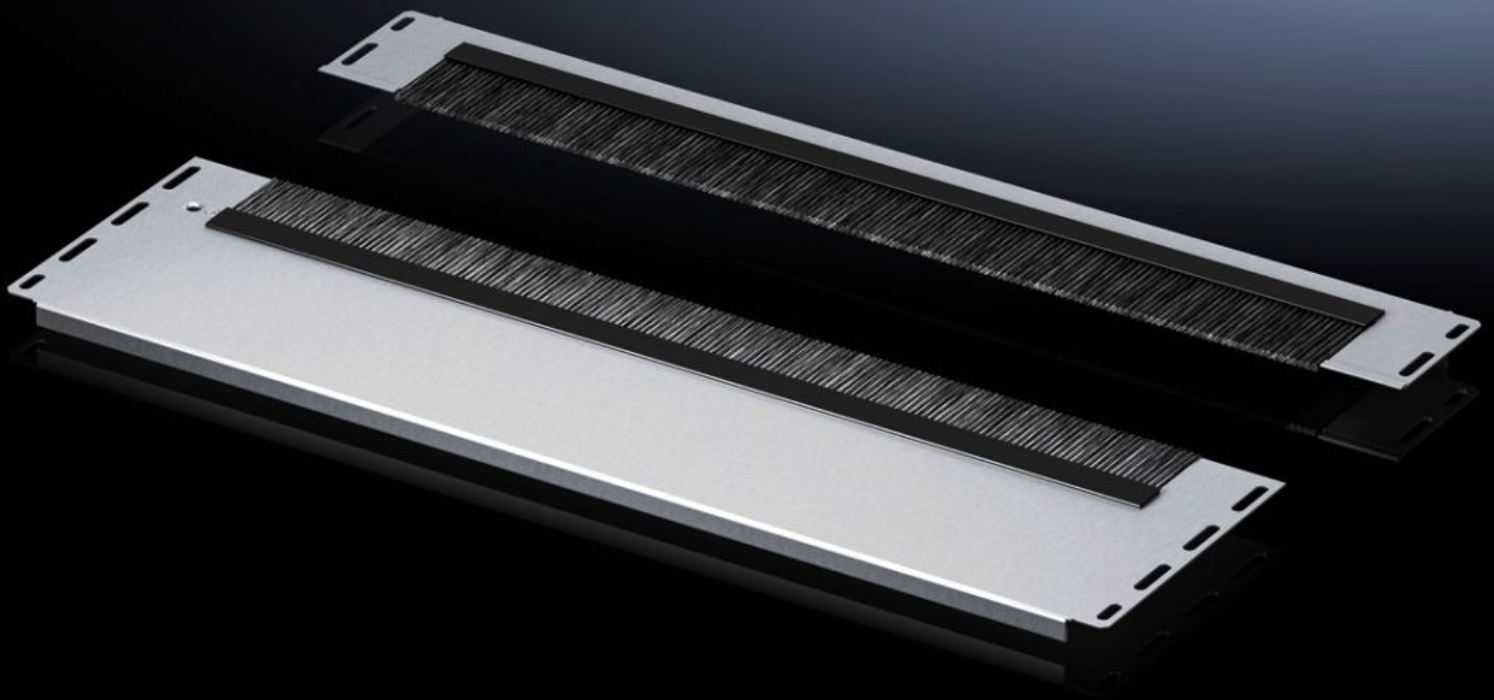


**Rittal – The System.**

Faster – better – everywhere.



**VX 5301.335**

**Gland plate module, multi-piece,  
with brush strip, super-airtight**

State: 31/12/2024 (Source: [rittal.com/com-en](http://rittal.com/com-en))

ENCLOSURES

POWER DISTRIBUTION

CLIMATE CONTROL

IT INFRASTRUCTURE

SOFTWARE & SERVICES

FRIEDHELM LOH GROUP



# VX 5301.335 - Gland plate module, multi-piece, with brush strip, super-airtight for VX IT

For targeted cable entry from below.



## Features

|                      |   |
|----------------------|---|
| Model No.            | VX 5301.335   |
| Design               | two-piece, with brush strip   |
| Product description  | For targeted cable entry from below. With correct cable entry, special brush strips with alternating offset brushes provide a more effective seal from the environment to support climate control. The two-piece design even allows retrospective fitting of the base module with the cables already installed. |
| Material             | Module plate: Sheet steel<br>Brush strip: Plastic, UL 94 HB, halogen-free<br>two-piece, with brush strip  |
| Surface finish       | Module plate: Zinc-plated   |
| Supply includes      | 2 module panel halves including brush strips, super-airtight<br>Assembly parts  |
| Assembly instruction | Several gland module plates must be combined to seal the base completely in the VX IT<br>The gland plate module may be combined in exchange with other base modules with a depth of 237.5 mm.   |
| Note                 | Gland plate modules with brush strip not suitable for applications with a protection category to IEC 60 529   |
| Dimensions           | Depth: 237.5 mm   |

# Features

|                               |  |
|-------------------------------|--|
| To fit                        | Enclosure type: VX IT<br>Width: = 800 mm   |
| Packs of                      | 1 pc(s).   |
| Net weight                    | 2  |
| Gross weight                  | 2.14   |
| PCF per pack (cradle-to-gate) | 8.2 kg CO2 eq (Cat B)  |
| Note on PCF category          | Category B: PCF value (cradle-to-gate) based on the product weight, approximately calculated and self-declared |
| Customs tariff number         | 73269098   |
| EAN                           | 4028177950870  |
| ETIM 9                        | EC002620   |
| ECLASS 8.0                    | 27189261   |